

Commercial Development Land

+/- 15.7 Acres

NO Reserve! **NO** Minimum!

ABSOLUTE AUCTION

Will be sold to the highest bidder regardless of price.

Wednesday, Sept. 24th @ 11AM On-Site

NEC of Middleton Road & Ustick Road, Nampa, Idaho

Directions: I-84, Exit #33B, N. to Ustick, W. on Ustick to Middleton Rd.

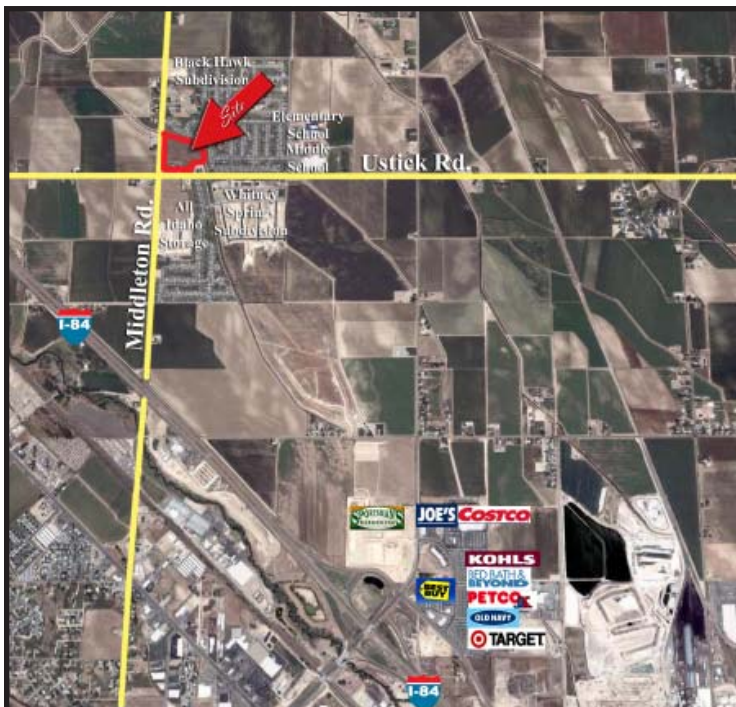
Commercial Development Land

+/- 15.7 Acres Zoned C-3

Excellent Nampa/Caldwell Location!

Located only 2 miles from Treasure Valley Marketplace
(Costco, Target, Joe's, Sportsman's Warehouse, etc.)

2 houses: 1,291 SF & 1,148 SF plus new Shop/Barn combo



No Reserve!
No Minimum!

www.CorbettBottles.com

Terms: 5% Buyers premium added to final live bid price to arrive at total purchase price. 5% (minimum of \$50,000) due as the nonrefundable deposit on auction day (personal checks accepted). Balance due within 30 days at closing. Properties are sold with no contingencies. Please inspect and conduct all due diligence prior to auction. Corbett Bottles Real Estate Marketing LLC, represent the Seller only. Broker/Agent participation invited. BUYER AND BUYER'S AGENTS TO VERIFY ALL INFO., PROPERTY IS SOLD "AS-IS".



REAL ESTATE MARKETING, LLC

208.888.9563

208.377.5700

Commercial Development Land

NO Reserve! **NO** Minimum!

ABSOLUTE AUCTION

Will be sold to the highest bidder regardless of price.

Wednesday, Sept. 24th @ 11AM On-Site

NEC of Middleton Rd. & Ustick Rd., Nampa, Idaho

+/- 15.7 Acres

www.CorbettBottles.com

